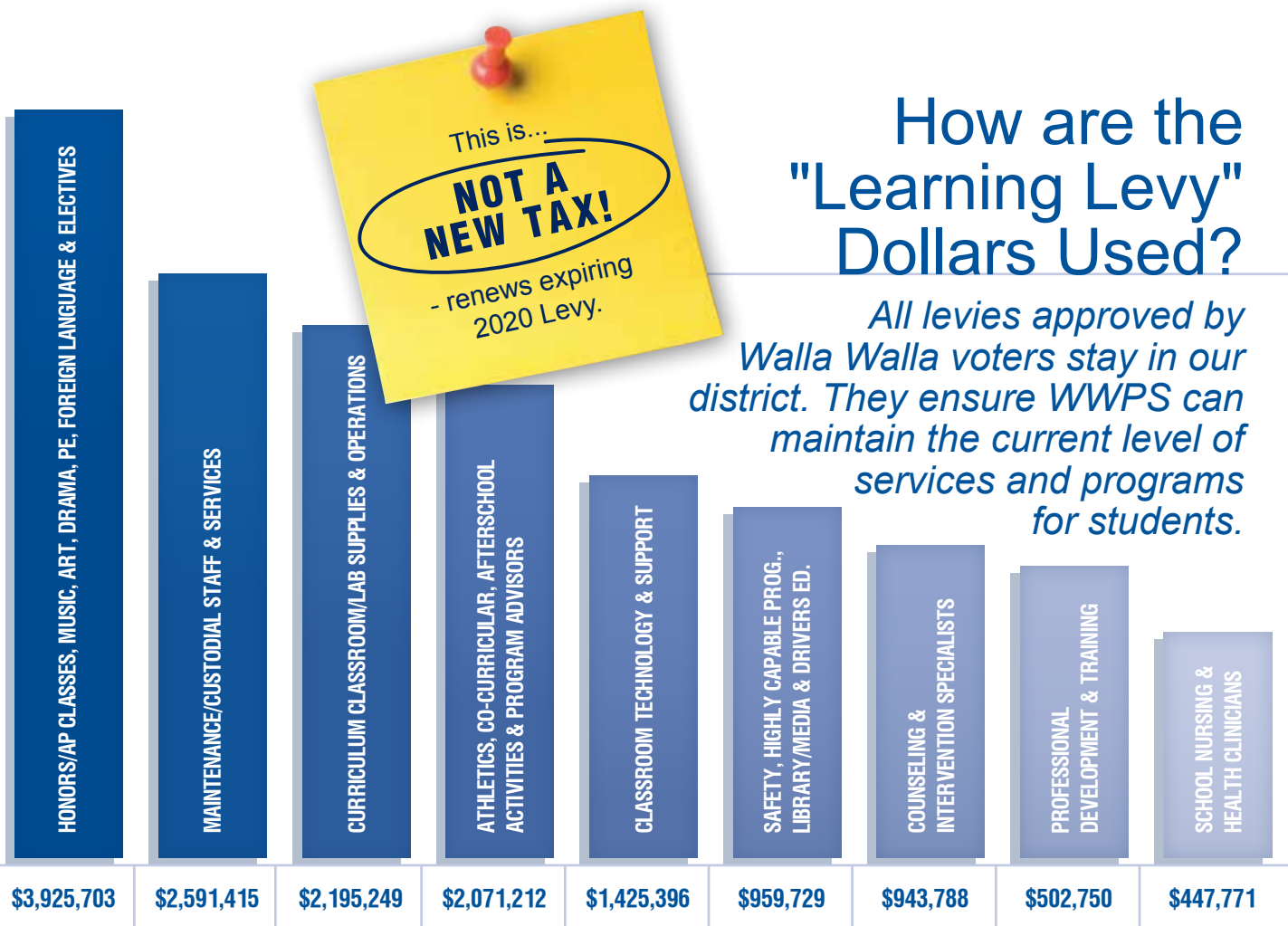




"The opportunity music provides for our students is immeasurable. It completes their education and teaches them teamwork and cooperation."

-ROGER GARCIA,
MUSIC COORDINATOR



How are the "Learning Levy" Dollars Used?

All levies approved by Walla Walla voters stay in our district. They ensure WWPS can maintain the current level of services and programs for students.



STAFFED PROGRAMS:	# OF STAFF FUNDED
Honors/AP Classes, Music, Art, Drama, PE, Foreign Language & Electives	42 FTE
Maintenance/Custodial Staff & Services	25 FTE
Athletics, Co-curricular, Afterschool Activities & Program Advisors	228 PTE
Classroom Technology & Support	8 FTE
Counseling & Intervention Specialists	13 FTE
School Nursing & Health Clinicians	10 FTE
School Safety	6 FTE
Highly Capable Program	3 FTE
Library & Media Services	4 FTE
Drivers Education	5 PTE
TOTAL FULL-TIME EQUIVALENT (FTE) STAFF	111 FTE
TOTAL PART-TIME EQUIVALENT (PTE) STAFF	233 PTE

Things to Know About Voting

APPROVAL RATE:
50% + 1 vote required for approval

VOTER REGISTRATION INFO:
315 W. Main St. (Room 203)
(509) 524-2530
elections@co.walla-walla.wa.us

Voter registration materials are available at all district schools and the district office.

TAX EXEMPTIONS:
Senior and disabled citizens may be eligible for an exemption. Contact the Walla Walla County Assessor's Office at (509) 524-2560 for additional information.

LEVY REVENUE IS FIXED:
Schools receive no additional dollars beyond the amount approved by voters. Increases in property values will not increase levy revenue.

FURTHER INFORMATION:
(509) 526-6716
mhiggins@wwps.org
www.wwps.org



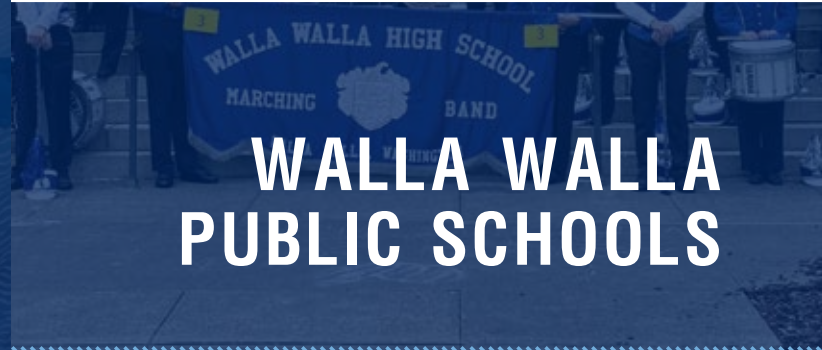
IMPORTANT DATES:
Election date: February 13, 2024
Ballots mailed: January 24, 2024



50+ YEARS OF LEVY SUPPORT

DATE	% YES	DATE	% YES	DATE	% YES
2020	73%	1994	75%	1979	75%
2016	67%	1992	74%	1978	77%
2012	64%	1990	73%	1977	77%
2008	55%	1988	72%	1976	69%
2004	67%	1986	76%	1975	76%
2002	70%	1984	83%	1974	72%
2000	67%	1983	78%	1973	77%
1998	66%	1982	77%	1972	63%
1996	65%	1981	77%	1971	68%
		1980	74%		

LEVIES BENEFIT ALL STUDENTS



WALLA WALLA PUBLIC SCHOOLS

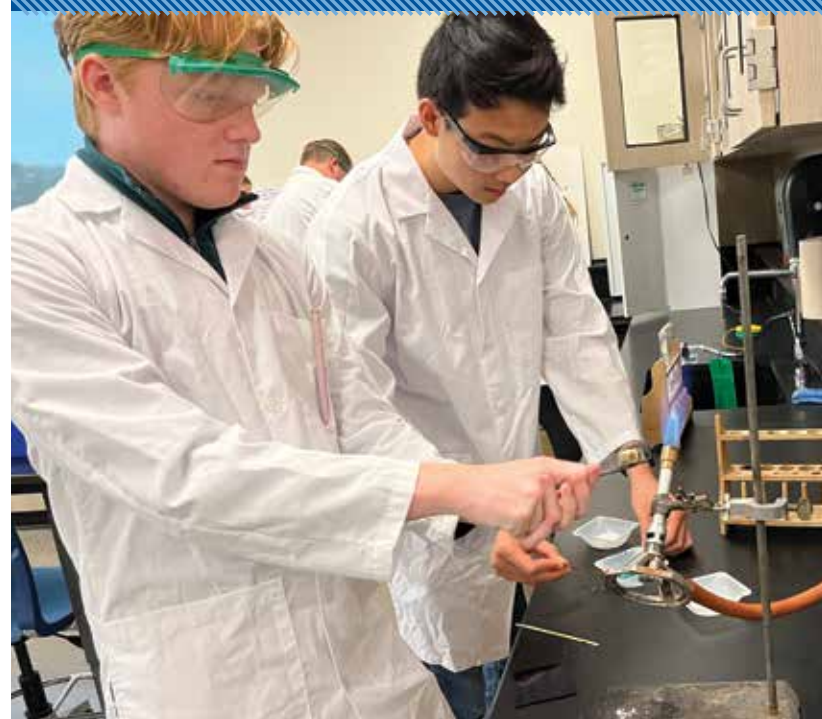
2024 LEVY MEASURES

STRONG

INVESTING IN THE SUCCESS OF OUR STUDENTS

LEVIES BENEFIT ALL STUDENTS

SCHOOLS | FAMILIES | FUTURE



REMEMBER TO VOTE
FEBRUARY 13, 2024



1

LEVY 1

THE REPLACEMENT "LEARNING LEVY" WILL CONTINUE TO FUND:

- Arts Programs
- Band, Choir & Orchestra Programs
- Honors & Advanced Placement Classes
- Theater/Drama
- Foreign Language Programs
- School Nursing/Health Services
- Explorers & Highly Capable Program
- Athletics, Activities and Clubs
- Drivers Education
- Counseling & Intervention Specialists
- Facilities Maintenance & Custodial Staff
- School Safety
- Classroom Technology & IT Staff
- Physical Education
- Educational Assistants/Para-Educators
- Library & Media Services
- Staff Professional Development & Training
- Curriculum and Classroom/Lab Supplies & Materials

REPLACEMENT EDUCATIONAL PROGRAMS & OPERATIONS "LEARNING LEVY"

What does it do?

Maintains quality education programs, operations & student opportunities not funded by the state

This is not a new tax, it replaces the expiring levy approved in 2020. The replacement Educational Programs and Operations Levy (EP&O), commonly referred to as the "Learning Levy," requires voter reauthorization every four years. Its renewal maintains the programs and offerings our community has approved at the ballot box for over half a century. From honors classes to band programs to the arts, the "Learning Levy" funds the programs, experiences and student opportunities not funded by the state.



General Fund Budget:

75% STATE
15% ... LOCAL LEVY
10% FEDERAL

What will it cost?

2024 EP&O "Learning Levy" Proposal

The EP&O "Learning Levy" maintains the same \$2.50 per \$1,000 rate approved by voters in 2020. It is legislatively capped and will not exceed \$2.50.

COLLECTION YEAR	APPROXIMATE RATE PER \$1000 OF ASSESSED VALUE	LEVY AMOUNT
2025	\$2.50	\$15,063,022
2026	\$2.50	\$15,665,543
2027	\$2.50	\$16,292,164
2028	\$2.50	\$16,943,851

2

LEVY 2

THE OUTDOOR ATHLETIC & ACTIVITY FACILITIES CAPITAL LEVY WILL FUND:

- Replacing the 60-year-old tennis courts at Wa-Hi
- Installing an all-weather track at Pioneer MS for school and community use
- Repairing the 43-year-old Garrison tennis courts (Chubb Courts) and resurface the 20-year-old track
- Consistent with all league schools, installing high quality artificial turf playing surfaces and field lighting (low spill/low glare) in order to maximize utilization, participation and post-season play at both the Klicker and Hayner Park fields at Wa-Hi
- Installing outdoor lighting (low spill/low glare) at the varsity baseball and softball fields in order to minimize instructional loss and maximize family attendance
- Installing elevated bleachers with ADA access at the Klicker Track and Field site for soccer, football and track and field spectators
- Providing adequate access to restrooms and changing rooms
- Constructing a JROTC "Raider Obstacle Course" for student, first responder and community use



OUTDOOR ATHLETIC & ACTIVITY FACILITIES CAPITAL LEVY

What does it do?

Improves specific outdoor athletic & activity facilities to address aged infrastructure, increases student participation/safety, and reduces missed instructional time

The district formed a 20-member independent Outdoor Athletic and Activity Facilities Committee last school year with the charge of developing recommendations to bring Walla Walla Public Schools middle and high school outdoor athletic and activity facilities up to comparable league standards. The committee wrapped up its work last summer. The short-term Capital Levy will be used to update outdoor spaces for athletics, activities, JROTC, physical education, marching band and other outside programming. In order to minimize impact to taxpayers, the board chose to proceed with the lower-cost recommendation and has identified grants and outside funding sources to help reduce costs. As a result, the Capital Levy rate is estimated to be no more than 38 cents and will automatically expire after six years.

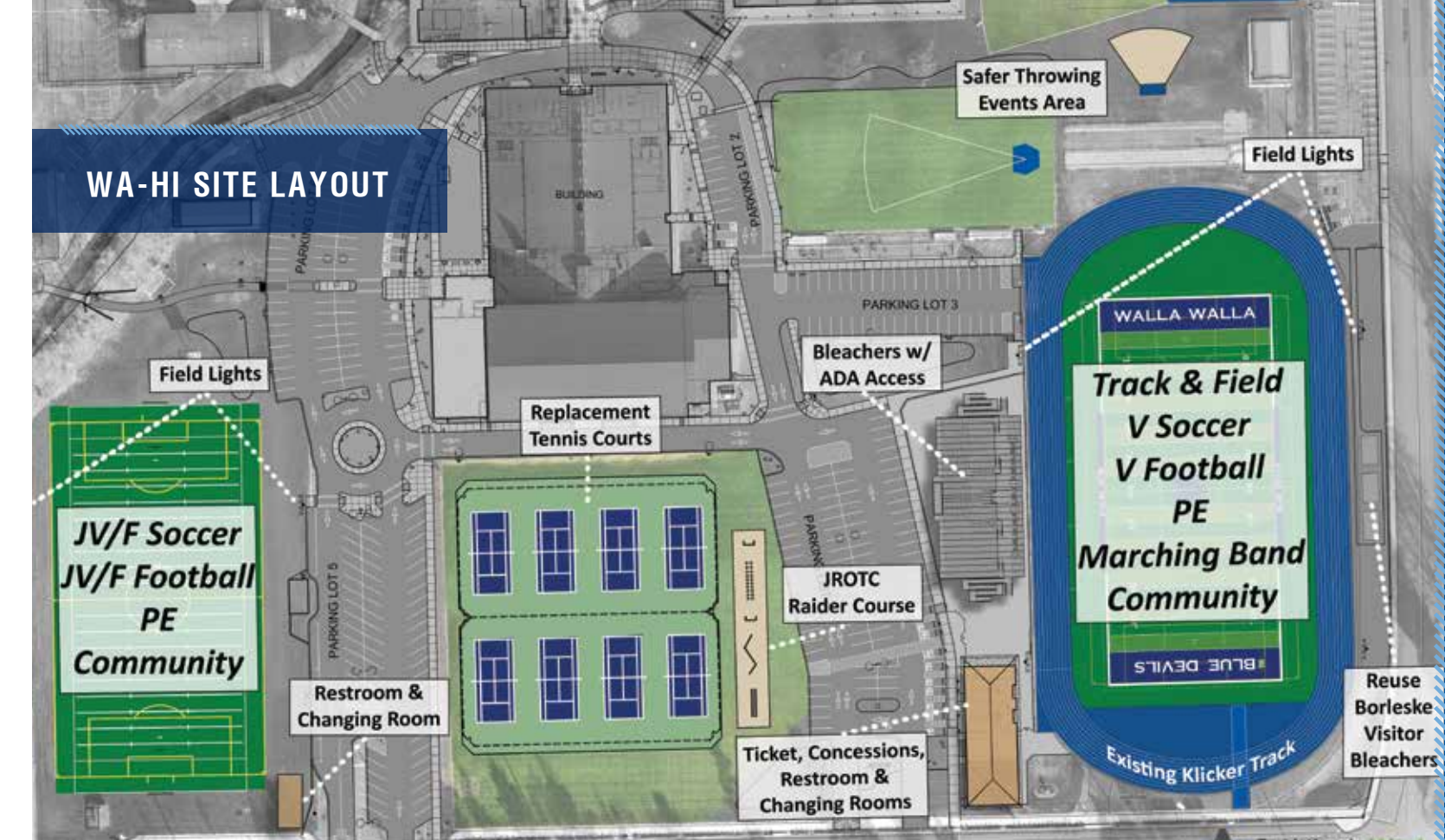


What will it cost?

2024 Outdoor Capital Levy Proposal

The Outdoor Capital Levy would cost about \$3 per month for every \$100,000 of assessed value. For a home assessed at \$300,000 the annual cost would be \$114 per year or \$9.50 per month through the six-year Capital Levy time frame.

COLLECTION YEAR	APPROXIMATE RATE PER \$1000 OF ASSESSED VALUE	LEVY AMOUNT
2025	\$0.38	\$2,289,661
2026	\$0.38	\$2,381,247
2027	\$0.38	\$2,476,497
2028	\$0.38	\$2,550,792
2029	\$0.38	\$2,601,808
2030	\$0.38	\$2,653,844



OUTDOOR ATHLETIC & ACTIVITY FACILITIES COMMITTEE MEMBERS

- Don Davis, *Chair*
- Andy Coleman, *Vice-Chair*
- Doug Hayes
- Scott Shields
- Julio Tapia
- Stephenie Bowen
- Lawson Knight
- Dewight Hall
- Denise Isenhower
- Kelly Belcher
- Robert King
- Mark Thompson
- Mike Monahan
- Phil Shivell
- Scott Krivoshein
- Stacy Bergevin
- Tim Wooster
- Jaime Tiscareno
- Colby Burke
- Dean Lodmell, *Volunteer Consultant*



"I'm proud to have served on this committee and believe we have done our due diligence to put together a package that prioritizes what our kids need most, while keeping tax rates low for our community."

-MIKE MONAHAN