



Advisory Luncheon

SEPTEMBER 2018



Walla Walla Public Schools

Developing Washington's Most Sought-After Graduates

What a Journey

Entry Plan

For Superintendent
Wade Smith



2016 – 17 School Year

Entry Plan Goal:

I will "hit the ground learning" through intentional engagement, reflective listening, and active participation, in order to ensure a transparent, thoughtful, and supportive transition for Walla Walla Public School students, staff, and stakeholders.

Entry Plan Timeline:

The entry plan process extends formally over a six-month period and is sequenced into four phases:

- Phase 1: Introduction (July – August, 2016)
- Phase 2: Listening to Understand (September – October 2016)
- Phase 3: Making Sense (October – November 2016)
- Phase 4: Engagement & Planning (November – December 2016)

Following Phase 4

Strategic Plan Development
(January 2017 – June 2017)



Entry Plan Commitments and Shared Understanding:

- Although a change in leadership can be an exciting time for a school district and its stakeholders, it is also important to embrace the reality that there will be confusion. It will take time for students, staff and our community to make the transition, to get to know me, to build trust, and to understand my leadership style and personality.
- It is my intention to engage as many stakeholders as possible, both within the organization and outside, in order to understand our current reality. I look forward to learning about the hopes, dreams, concerns, and ideas we all share for our students and their collective success.
- I will structure purposeful interactions throughout the first six months of the year to ensure a diverse and deliberate opportunity for stakeholder input.
- I will listen reflectively to the feedback received and affirm that significant changes to current practice will not be initiated during this transition time.
- I will openly process and share my findings with the Board of Education and community.
- Together, we will use the information gathered to establish a collective vision, deliberate goals for student learning, and a shared consensus around how best to achieve and support our objectives through strategic planning.



Walla Walla Public Schools

Developing Washington's Most Sought-After Graduates

Developing Washington's Most Sought-after Graduates



OUR MISSION

- Walla Walla Public Schools ensures all students receive high quality instruction in an aligned and coherent system while addressing their social and emotional needs in a safe and engaging environment.

OUR BELIEFS

- We believe...
 - in challenging and supporting all students
 - quality instruction is critical to student success
 - in investing in staff to ensure excellence
 - in maximizing the impact of our resources
 - in collaborative and transparent operation
 - in the importance of family and community
 - diversity is a strength



Accountability & Goals



ALL LEVELS	ELEMENTARY & MIDDLE SCHOOL	HIGH SCHOOL	HIGH SCHOOL COMPLETION	COLLEGE	CAREER
<ul style="list-style-type: none"> » Chronic Absenteeism » Student Engagement & Involvement » Safety & Health 	<ul style="list-style-type: none"> » 3rd-8th Grade Reading & Math » English Language Learners and Special Education Success 	<ul style="list-style-type: none"> » 9th Grade Course Failure Rates » ACT Performance 	<ul style="list-style-type: none"> » 4 and 5 Year Graduation Rates 	<ul style="list-style-type: none"> » College Enrollment » College Remediation 	<ul style="list-style-type: none"> » "Washington's Most Sought-After Graduates"

SNAPSHOT - Select Student Success Targets

READING AND MATH (3rd-8th grades) » TARGET GOAL: 2.5% improvement per year	4 AND 5 YEAR GRADUATION RATES » WWPS 4 year rate: 79.4% » STATE: 79.1% » TARGET 4 YEAR GOAL: 85% - by 2021-2022 » WWPS 5 year rate: 83.5% » STATE: 81.9% » TARGET 5 YEAR GOAL: 90% - by 2021-2022
CHRONIC ABSENTEEISM » WWPS: 16.2% » STATE: 16.7% » TARGET GOAL: 10% - by 2021-2022	2 AND 4 YEAR COLLEGE ENROLLMENT » WWPS college attendance rate: 67% » STATE: 60% » MONITOR FOR CONTINUED IMPROVEMENT
ACT SCORES (composite scores) » WWPS: 19.9 » TARGET GOAL: 22 - by 2021-2022	COLLEGE REMEDIATION RATES (Graduates enrolled in college who take a remediation course) » WWPS: 50% » STATE: 33% » MONITOR FOR CONTINUED IMPROVEMENT
9TH GRADE COURSE FAILURES » WWPS: 25.4% » STATE: 22.5% » TARGET GOAL: 15% - by 2021-2022	



First Year Results

- Elementary
 - 5th Grade Blue Ridge Team: 14% gain in ELA and 31% gain in math
 - 5th Grade Berney Team: 17% gain in ELA
- Middle School
 - Pioneer 8th Grade: 14% ELA increase
 - Garrison 8th Grade: 13% Math increase
- High School Level
 - Nationally recognized number of students, especially those of minority, enrolling and excelling in AP classes
 - Co-Curricular Involvement: 32% Latino/Hispanic (+4%) and 31% Low Income
 - WaHi 4yr/5yr Grad Rates 85.4%/93.1% (+1%/+4%)
 - Record number of Lincoln graduates



Our Next Steps





Walla Walla Public Schools

Developing Washington's Most Sought-After Graduates

November 6, 2018

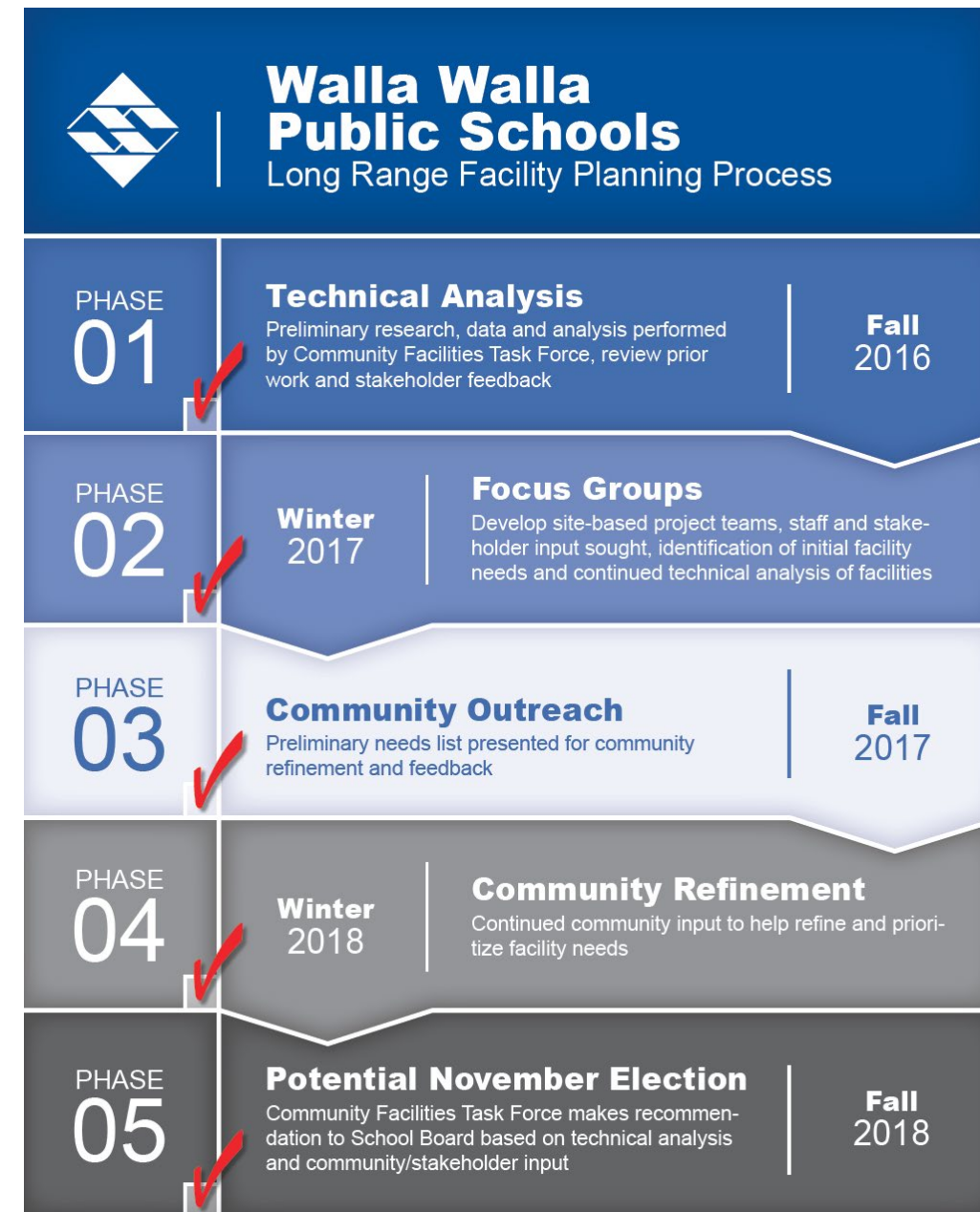
Replacement Bond



DICK NEHER
1949 Alum and Former Wa-Hi Principal, Teacher and Coach

Two-Year Process by New School Board

- Board committed to deliberative process that began Fall 2016
 - Proactively address community input
 - Thoroughly study all facilities
 - Engage with stakeholders and seek community priorities
 - Ensure a transparent and accountable process
 - Consider only pragmatic and cost-effective solutions





PAUL SCHNEIDMILLER

Community Facilities Task Force Chair



Community Facilities Task Force Membership

- Paul Schneidmiller (Chair) - *Business*
- Tony Cabasco - *Higher Education*
- Jim Dumont - *City WW*
- Roger Esparza - *Realtor*
- Darcey Fugman-Small - *Business*
- Chris Garratt - *Health Services*
- Randy Glaeser - *County WW*
- Don Holbrook - *Corrections*
- John Keifel - *Classified Rep*
- Dean Lodmell - *Local Engineer*
- Dick Moeller - *Local Contractor*
- Linda Newcomb - *Local Architect*
- Jim Peterson - *Higher Education*
- Kara Schulke - *Parent*
- Phil Shivell - *Local Contractor*
- Craig Sievertsen - *Finance*
- Keith Swanson - *Certificated Rep*
- Peter Swant - *Port Commissioner*
- Casey Waddell - *Finance*
- Jerry Zahl - *Agriculture*

Public Input Drives No Tax Rate Increase Proposal



New School Board Listened & Learned



- **Make efforts to keep money local**

- Through intentional project phasing, delivery methods, and thoughtful programming, the Board will make every effort to maximize opportunity for local contractor/vendor involvement

Safety and Security at All Campuses

- Improved access control measures
- Increased cameras
- Lock-down capabilities
- Fire safety enhancements
- Improved traffic flow and pedestrian access
- ADA/accessibility
- Emergency communication improvements
- Backup power to maintain phone/life-safety measures



Oversight & Accountability to Taxpayers



Membership

- Bonnie Bowton
- Yolanda Esquivel
- Mark Hess
- Lawson Knight
- Kim McDaniels
- Terry McConn
- Jennifer Mouat
- Dick Moeller
- Scott Morasch
- Ken Seibold
- Tony Wenham



Visit WWPS.org

- Details about the proposed bond measure
- Virtual tours of Wa-Hi, Lincoln and Pioneer
- Proposed improvements and costs per site and project
- Bond Oversight Committee, updates and local contractor/vendor involvement



Registration

- » **ONLINE REGISTRATION**
Is easy at MyVote Washington
- » **VOTER REGISTRATION**
Registration forms are at all schools
and the WWPS District Office

Voting Dates

- » **October 8, 2018 -**
Last day for mail, online new
registrations and address changes
- » **October 17, 2018 -**
Ballots mailed to homes
- » **October 29, 2018 -**
Last day for in-person voter
registration
- » **November 6, 2018 -**
Election (ballots due)



feedback
ideas
comments
thoughts
suggestions

