

Garrison School Improvement Plan



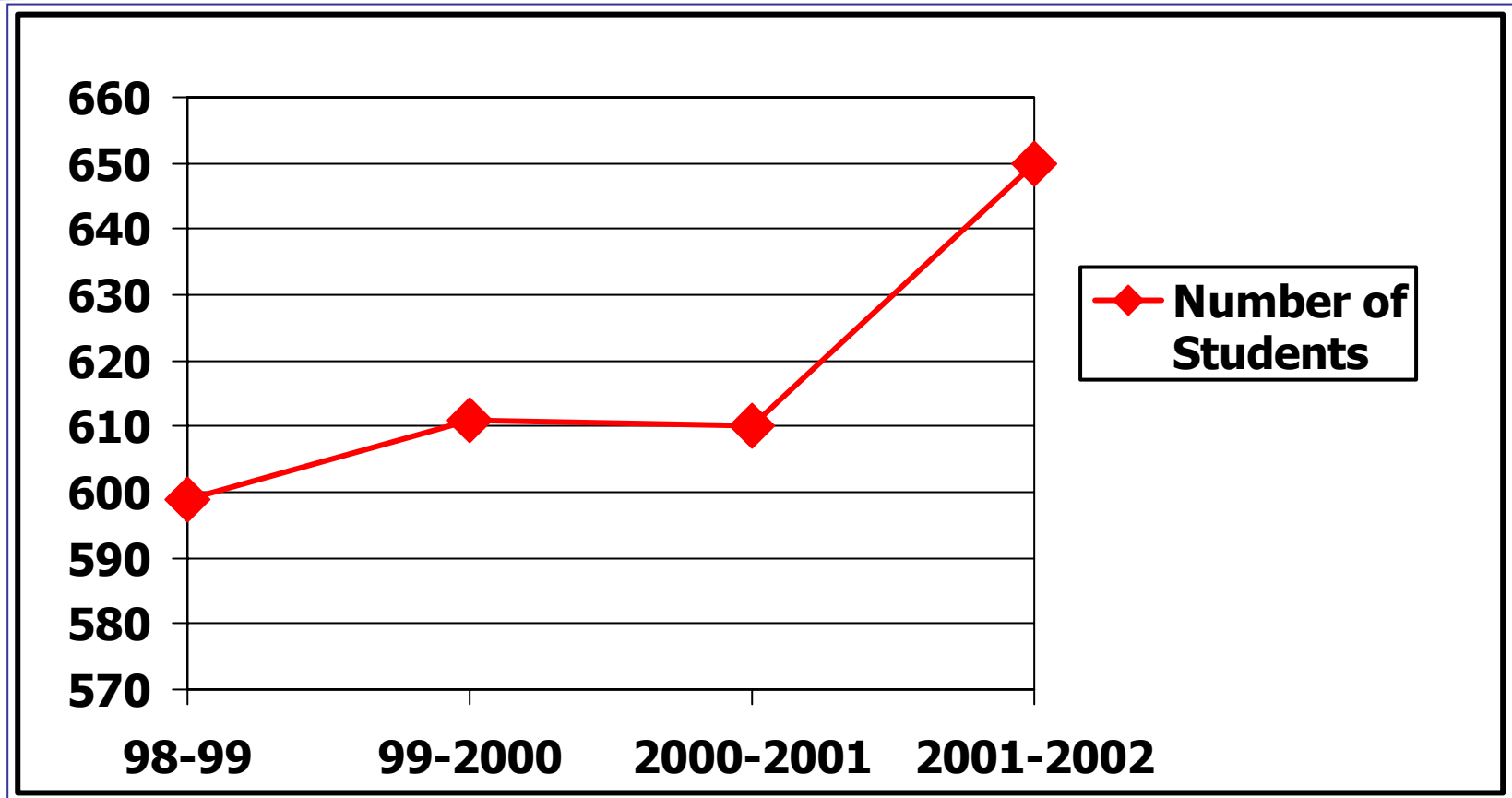


Analyzing Garrison



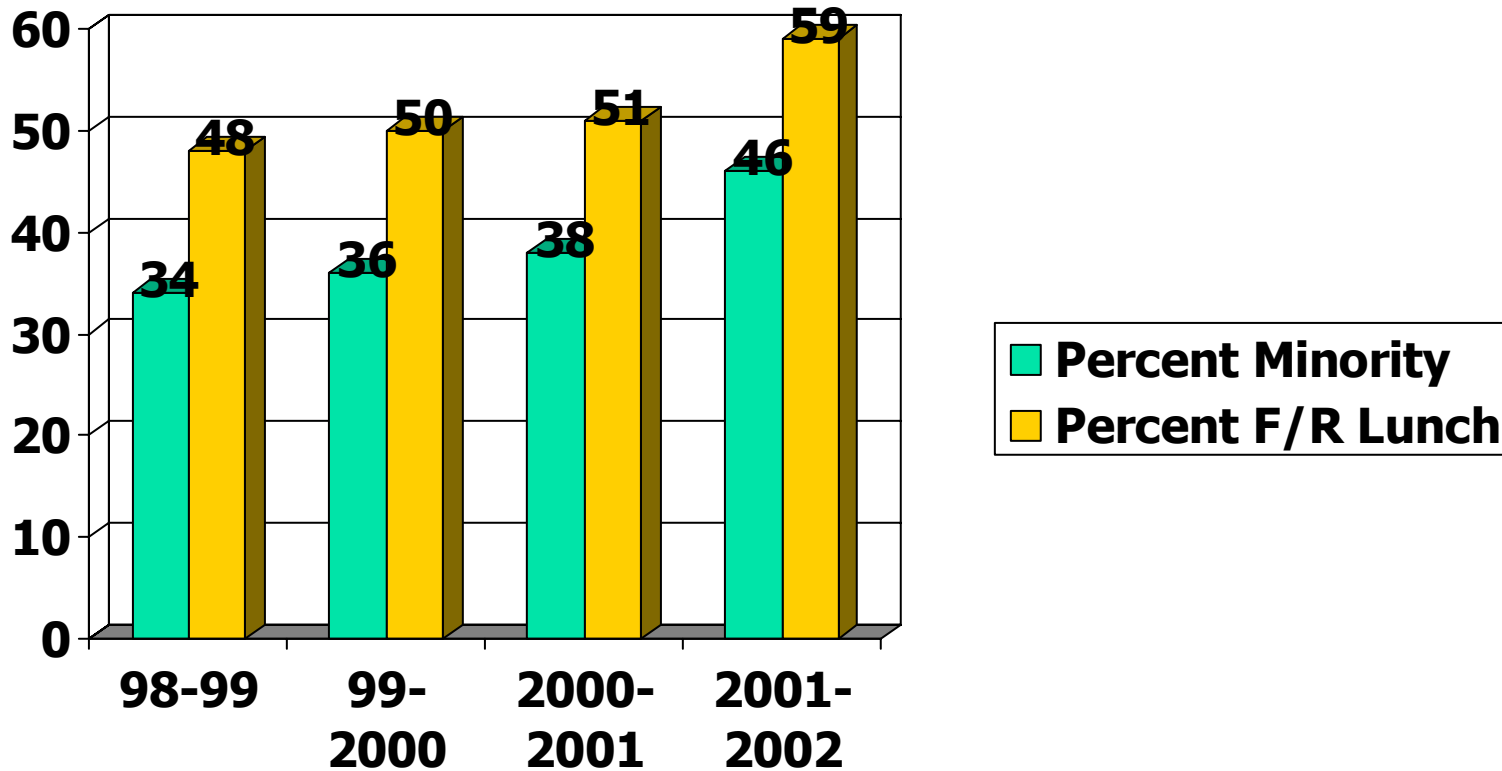
- What does Garrison look like?
- What do our test data show?
- Goals and Challenges for:
 - Math
 - Reading
 - Writing
- Assessment and student analysis

Garrison Enrollment Continues to Increase



Garrison Demographics:

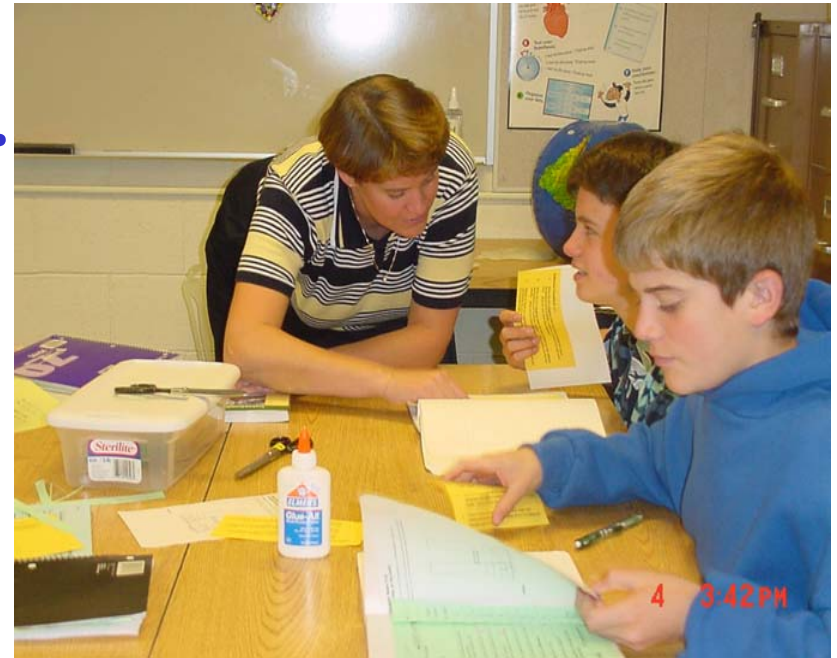
8% Increase in Minority and Poverty within last year



*Even with this impact
Garrison shows growth
on the WASL
in Reading, Writing and
Listening*

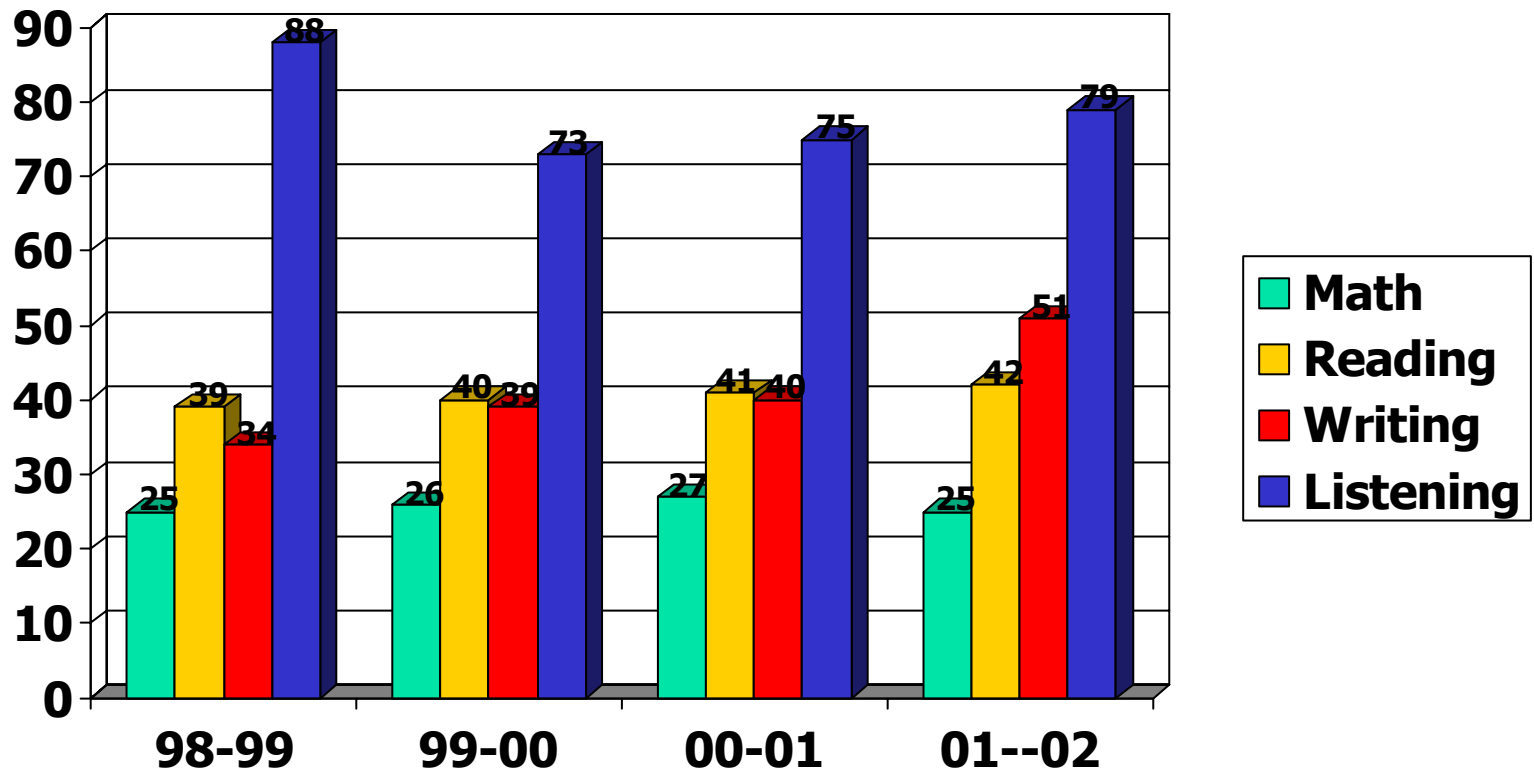
**But we can and must
do better!!!**

**How?
Analyze data**



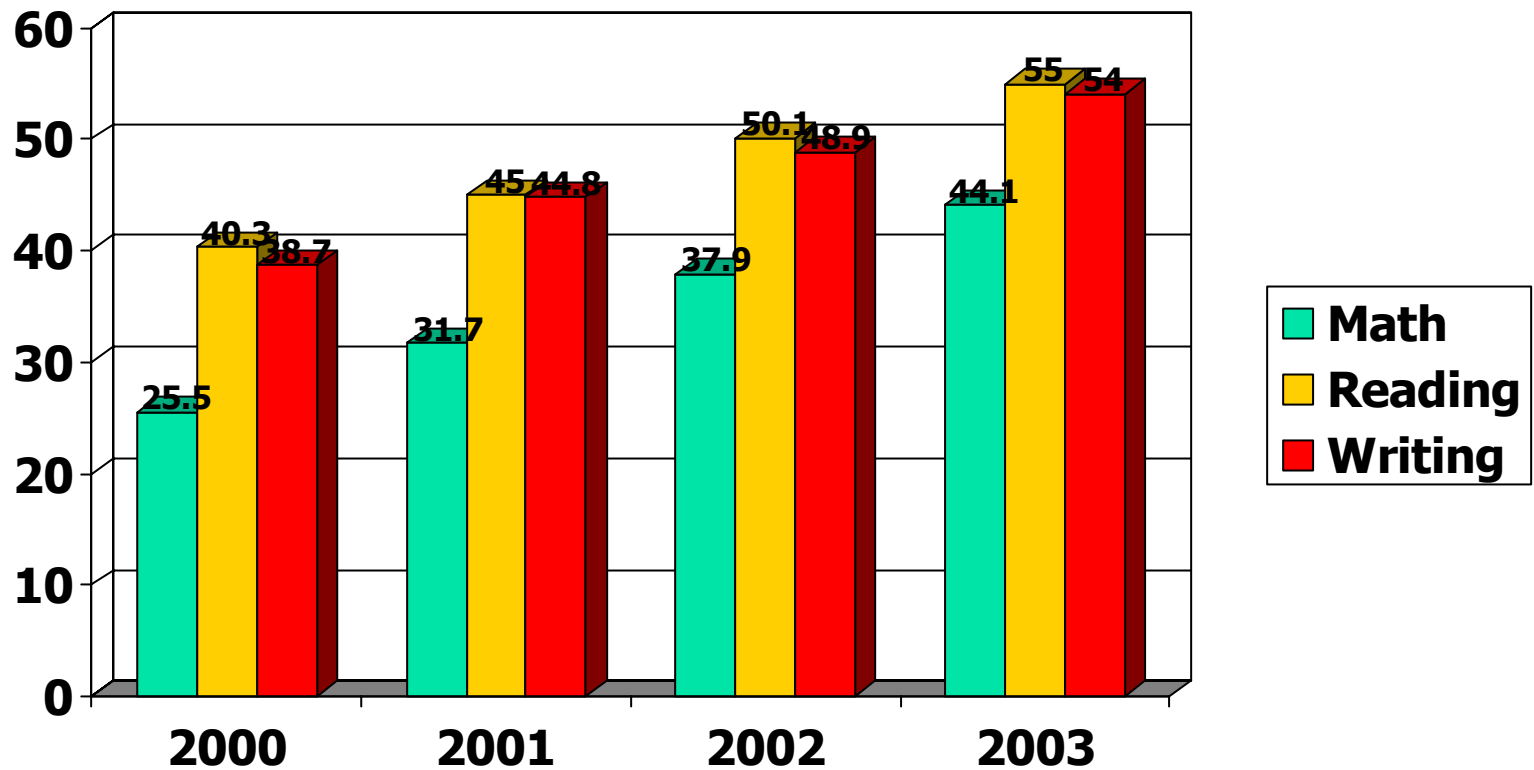


Percent Passing WASL



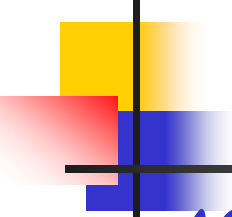


State Accountability Target



Reading Goal:

Increase WASL scores by 10% over 2002

- 
- ACCOMPLISHMENTS
 - ALL students take reading
 - All grade levels offer remedial reading
 - SOAR teachers receiving coaching
 - Data base for tracking progress using WALT, ITBS, WASL and STAR
 - Possible 3 year staff development

CHALLENGES

- More remedial students than we can cover
- Many level 2 students that would benefit from SOAR
- Bilingual need more than SOAR due to limited language development
- Master schedule changes needed to accommodate remedial readers

MATH GOAL

10% Increase in students meeting Number Sense WASL Standard

ACCOMPLISHMENTS

- ❖ Connected Math
Implemented grades 6-8
- Math teachers in CMP
training: district &
building
- Math Lab for students
Tues-Thurs 3:00-4:00
- Parent Night to explain
CMP

Challenges

- ❖ Transition to new
curriculum for both
teachers and students
- ❖ Need a Math lab for 6th
grade students
- ❖ Additional CMP training &
collaboration for teachers
both inside and outside
district

Writing Goal

10% Increase in Students meeting WASL Writing Standard

■ ACCOMPLISHMENTS

- Staff development during 2001-2002 in Six Traits
- Students are writing across the curriculum
- Teachers have focused writing and assessments around WASL format
- Teachers are using team meetings to address student writing

■ CHALLENGES

- Continue staff development with Six Trait Writing
- Breakdown WASL data to identify gaps and areas of student deficiencies
- Provide staff with time to collaborate

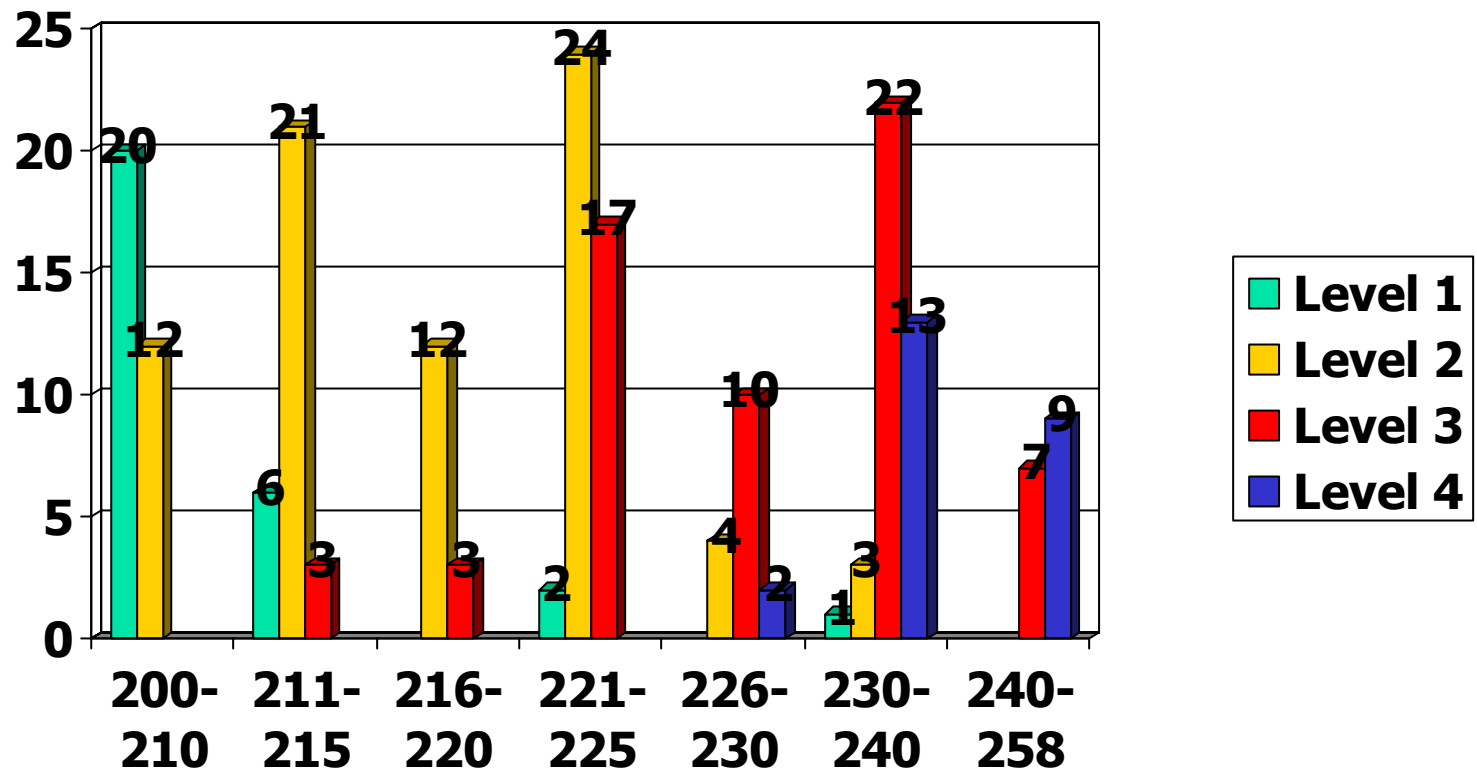
Assessment Strategies

- Using assessment data to identify students failing the WASL at Level 1 and Level 2
- Determining a range of WALT scores to use as predictors for Level 2 students..

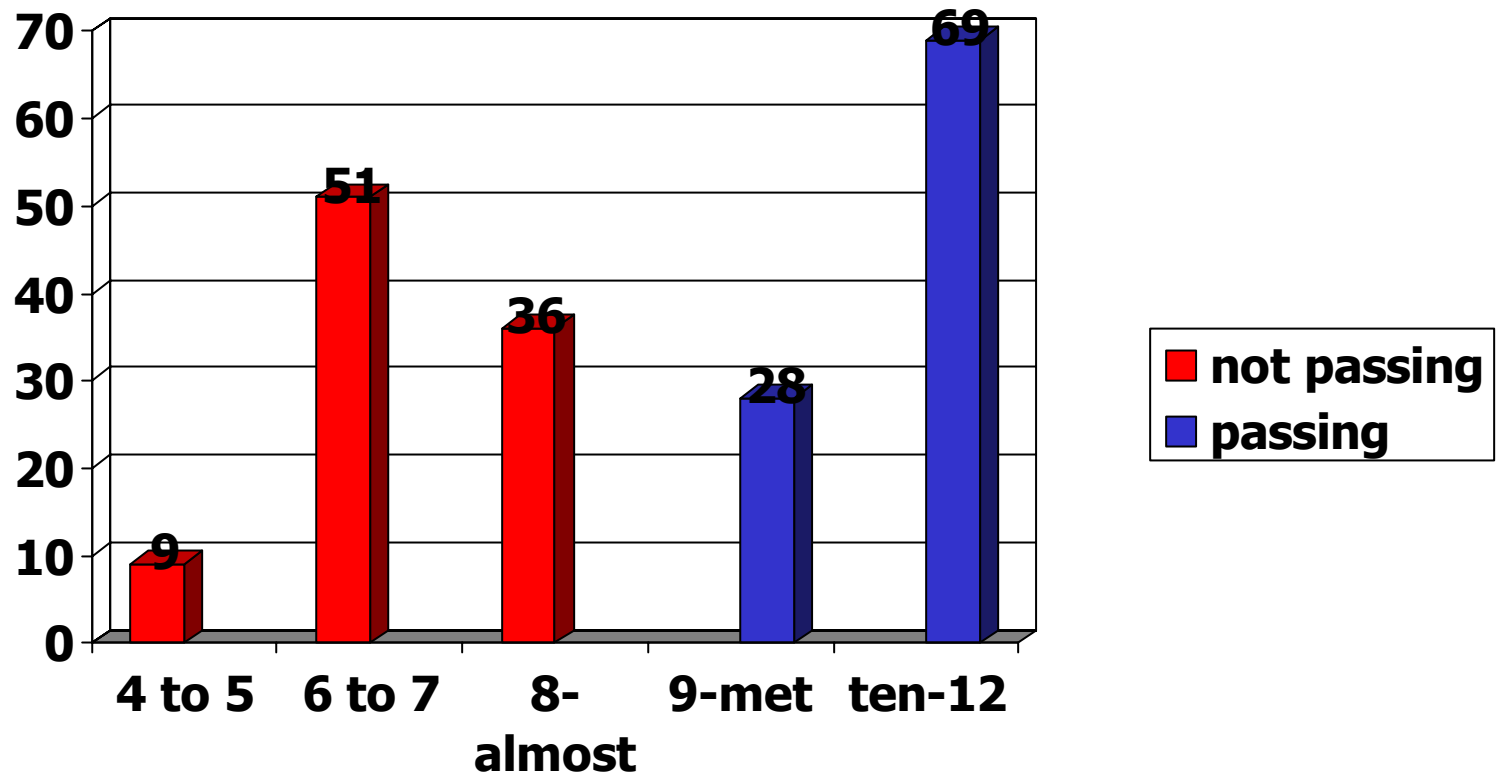
Those we can save now



WALT Predictor for Reading Students to target: 221-225



WASL Writing Distribution



More Assessment Strategies



- Teams are identifying struggling students
- These students are assessed using a rubric containing objective and subjective data
- Interventions are created using nine essential strategies for increasing achievement
- Individual plans are then developed for these students



Individual Student Intervention Data Record

Student : _____ Subject/Teacher: _____ Date: _____

Test Scores:

	SCORE	DATE
WALT- R		
WALT-M		
WASL-R		
WASL-M		
WASL-W		
STAR-IRL		

Contributing Factors:

- Teacher observations
- IEP/504 Adaptations
- Bilingual/bicultural
- Motivation
- Organization/Management skills
- External Factors
- External Resources

Interventions:

- Previously successful
- New Strategies

Together we can make it happen

- Individual accountability is expected from teachers, students and parents
- Improvement happens best in a nurturing environment where caring relationships are the foundation upon which improvement is built

